

COOPERATIVE CONNECTIONS



Antler Shed Hunting

**Shed Hunter Kelly
O'Bryan**

Pages 8-9

Artificial Intelligence

Pages 12-13

Thank You for Celebrating 80 Years With Us



Stephanie Horst
horst@byelectric.com

We want to extend a heartfelt thank you to everyone who attended our Annual Meeting. This year's gathering was especially meaningful as we celebrated 80 years of service to our members and communities. Since 1945, B-Y Electric has remained committed to delivering safe, reliable, and affordable electricity—and we couldn't have reached this milestone without your trust and support.

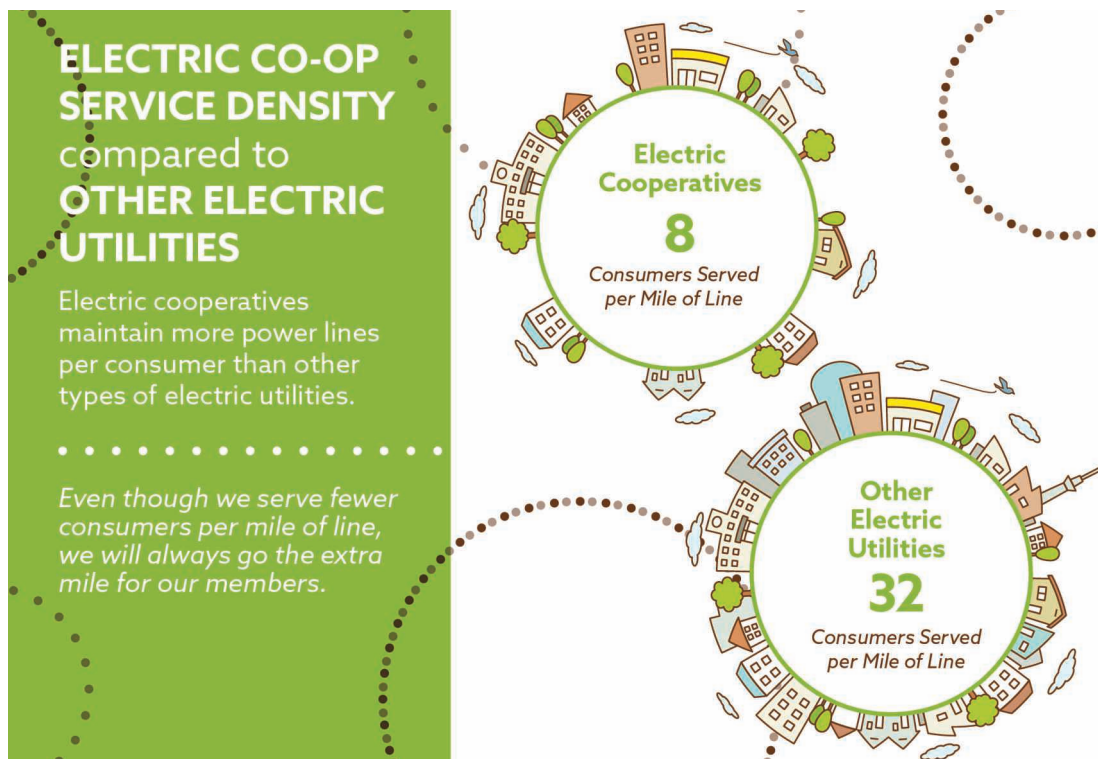
The event was a reminder of just how strong the cooperative model is when members stay engaged. Seeing familiar faces and welcoming new ones reminded us that our strength has always come from you—our members. Your involvement and support are what keep this cooperative thriving.

We're proud to share that 2024 ended on a strong note. Through careful financial management and ongoing investments in our distribution system, B-Y Electric remains well-positioned to meet your needs today and into the future.

As we look ahead, we're also closely monitoring developments at the generation and transmission level. Our generation cooperative is actively investing in major infrastructure upgrades to meet growing demand and ensure system reliability for decades to come. These investments are necessary, but they come at a cost. They have indicated that a rate increase in 2026 is inevitable to support these critical improvements.

Please know that we are advocating on behalf of B-Y Electric members to keep any rate adjustments as fair and affordable as possible. Our priority remains delivering reliable electricity at the lowest possible cost, and we're committed to transparency throughout this process. More information regarding the upcoming rate increase will be shared in future communications.

Thank you again for joining us in celebrating 80 years of cooperation. We look forward to continuing to serve you with the same dedication and community focus that has defined B-Y Electric since the beginning.



COOPERATIVE CONNECTIONS

BON HOMME YANKTON ELECTRIC

(USPS No. 018-973)

Bon Homme Yankton Electric Association, Inc
PO Box 158
134 S. Lidice St.
Tabor, SD 57063

Office Hours:
Monday through Friday
7:30am - 4:00pm

Pay by Phone, call:
1-855-941-3507

To report an outage, call:
Local call from Tabor, Tyndall, and Yankton:
605-463-2507

NOTICE: Electric bills must be paid by 10:00am on the 20th of each month to avoid a \$10 late fee.

Board President: Dean Sternhagen

Board of Directors

- Dave Sykora - Vice President
- Dave Sternhagen - Secretary
- Robert Ruppelt - Treasurer
- Paul Voigt
- Brian Brandt
- Rick Cheloha

General Manager: Stephanie Horst

Operations Manager: Ken Carda

Office Manager: Nicole Einrem

Members Service Advisor: Aaron Melichar

Editor: Chantelle Jungemann

Bon Homme Yankton Electric Cooperative Connections is the monthly publication for the members of Bon Homme Yankton Electric Association, Inc, PO Box 158, 134 S. Lidice St., Tabor, SD 57063-0158. Families subscribe to Cooperative Connections as part of their electric cooperative membership. The purpose of Bon Homme Yankton Electric Cooperative Connections is to provide reliable, helpful information to electric cooperative members on electric cooperative matters and better rural living. Subscription information: Cooperative members devote 50 cents from their monthly electric payments for a subscription. Non-member subscriptions are available for \$12 annually. Periodicals postage paid at Tabor, SD 57063.

Postmaster: Please send address changes to Bon Homme Yankton Electric Cooperative Connections, PO Box 158, Tabor, SD 57063; telephone (605) 463-2507. This institution is an equal opportunity provider and employer.

Bon Homme Yankton Electric is an equal opportunity provider and employer.



JULY BOARD MEETING

The July board meeting was held on July 16, 2025 at 8:00 am. Directors present were Dave Sternhagen, Dave Sykora, Dean Sternhagen, Rick Cheloha, Brian Brandt, Robert Ruppelt and Paul Voigt. Others present were the attorney, management staff and guest employee.

THE BOARD APPROVED THE CONSENT AGENDA:

- June 2025 Board Meeting Minutes
- Capital Credits to Estates June - \$9,170.79
- Capital Credits to Estates May - \$797.06
- Review New Members & Cancellations
- Review Closed Work Order Inventory - #920 - \$31,246.76
- Review Special Equipment Purchases - \$29,444.84

THE BOARD REVIEWED AND ACCEPTED FOLLOWING REPORTS:

- Member Service Report
- Operations & Safety Report
- Office & Financial Reports
- General Manager Report

- East River Cyber Security/IT Report
- SDREA Board Report
- East River Report
- CFC Forum Report

OTHER GOVERNANCE

- Approved 2024 990 & 990 T
- Appointed Basin Electric Annual Meeting Voting Delegate/Alternate (Cheloha/Horst)
- Discussion on Director District 7 given no one took out petition for that election. Vote to fill vacancy at September 17, 2025 Board Meeting.
- Enter/Exit Executive Session - None
- Next Meeting date set for Wednesday, August 20, 2025, at 8:00 am.

FINANCIAL REPORT	JUNE		YTD
	2024	2025	2025
TOTAL ELECTRIC REVENUE	\$933,319	\$1,101,468	\$6,285,286
COST OF POWER	\$547,211	\$692,069	\$3,693,774
TOTAL COST OF SERVICE	\$922,345	\$1,051,763	\$6,126,424
KWHS PURCHASED	7,450,504	7,950,696	51,950,773
RESIDENTIAL AVERAGE KWH	1,211	1,266	
RESIDENTIAL AVERAGE BILL	\$163	\$179	

Welcome New Members		
Avon	Irene	Larry & Lori Leader
Becvar Family LLP	Mathew & Tanya Munkvold	Mark Lee
Mission Hill	Scotland	Benjamin & Rebecca Lancaster
Chase Dahlerup	The Pork Group, INC.	Robert & Barbara Wilber
Nick Scheer	Yankton	Scott Hansmann
Menno	Abraham & Brook Schroeder	Tania Acosta
Robbie & Jodi Kirschenman	Gunnar Wiese	Zachary & Erica Wilmes
	Kneifl Tymber LLC	
	Lance Ryken	



Going on now! Single to Joint Membership Conversion at no charge
 Call 605-463-2507 or email ebiz@byelectric.com for more information.

Emergency Preparedness: Are You Ready for a Disaster?

Source: National Safety Council

National Preparedness Month, sponsored by the Federal Emergency Management Agency and held annually in September, is a good reminder that natural and man-made disasters can strike at any time. It's important to have a planned response when you're at work, on vacation or on the road.

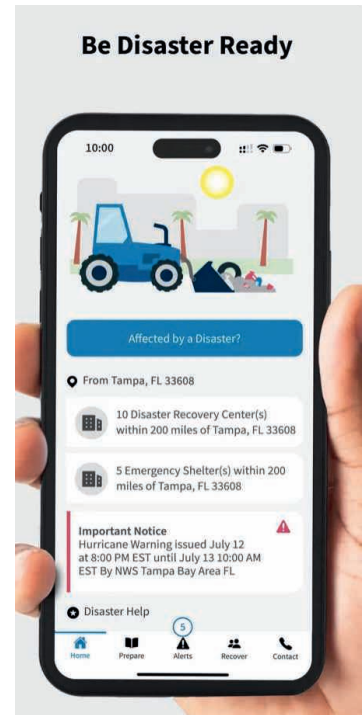
In 2022, 69,473 weather-related events resulted in 813 deaths and 1,718 injuries. Winter weather, heat, floods and hurricanes resulted in the most deaths that year, according to Injury Facts.

The National Safety Council offers safety tips specific on preparing for earthquakes, floods, hurricanes and tornadoes, and how to minimize fire risks.

Federal agencies, like Ready.gov and the National Oceanic and Atmospheric Administration also are valuable resources for emergency preparedness. When you face a natural or man-made emergency, try to stay informed through radio, TV or the Internet. In some cases, however, cable, electric and cell phone service will be disabled, making communication nearly impossible. The National Safety Council recommends the following general precautions that apply to many disaster situations:

- Make sure at least one family member knows first aid and CPR.
- Download the FEMA app for resources, weather alerts and safety tips.
- Have a family communication plan in place; all members of the family should review and practice the plan.
- Have all family members' and other important phone numbers written down or memorized.
- Have an emergency kit in your car and at least three days of food and water at home.
- Be sure to store all important documents – birth certificates, insurance policies, etc. – in a fire-proof safe or safety deposit box.
- Know how to shut off utilities.

The official FEMA mobile app offers critical resources and real-time alerts to help you prepare for emergencies, stay safe during disasters, and navigate recovery afterward. With features like customizable emergency checklists, shelter locations, disaster recovery centers, and direct access to emergency alerts, the app is a comprehensive tool for personal and family safety planning.



"Don't drive tractors into power lines."

Darcy Welsh, Age 9

Darcy cautions readers while driving tractors near power lines. Great picture, Darcy! Darcy's parents are Ryan and Rachel Welsh from Oral, S.D.

Kids, send your drawing with an electrical safety tip to your local electric cooperative (address found on Page 3). If your poster is published, you'll receive a prize. All entries must include your name, age, mailing address and the names of your parents. Colored drawings are encouraged.

Fruit SPECIALS

FROZEN FRUIT FIESTA

Ingredients:

- 1 6-oz. frozen orange juice concentrate
- 2 10-oz. frozen strawberries
- 2 cans pineapple with juice (1 tidbits, 1 crushed)
- 3-4 bananas, sliced
- 1/4 cup lemon juice
- 1 cup sugar
- 1 1/2 cup cold water

Method

Mix all together in a large bowl. Freeze in individual cups. Set out at room temperature for 1-2 hours before serving.

Optional: pour sour or 7-Up on top before serving.

Ginny Jensen
Sioux Valley Energy

PEACH RHUBARB CRISP

Filling:

- 3/4 cup sugar
- 3 tbsps. flour
- 1/2 tsp. nutmeg
- 1/8 tsp. salt
- 3 cups rhubarb (sliced, fresh or frozen)
- 2 1/2 cups chopped fresh or frozen unsweetened peaches

Topping:

- 1/2 cup flour
- 1/2 cup oatmeal
- 1/2 cup brown sugar
- 3/4 tsp. cinnamon
- 1/8 tsp. salt
- 5 tbsps. butter (cold)

Method

Combine the filling ingredients and fruit. Transfer to a greased 11"x7" baking dish. In a small bowl, combine the topping ingredients; cut in butter until mixture resembles coarse crumbs. Sprinkle over fruit. Bake at 375°F for 30 to 35 minutes until bubbly and browned.

*Recipe can be cut in half and bake in 8" x 8" pan.

Sally Florey
Charles Mix Electric

CHERRY ICE CREAM DESSERT

Ingredients:

- 1 1/2 cup Rice Krispies, crushed
- 1/4 cup brown sugar
- 1/4 cup melted butter
- 1 cup grated coconut
- 1/4 cup chopped nuts
- 1-quart vanilla ice cream
- 1 cup cherry pie mix

Method

1. Melt butter in frying pan. Add coconut and toast, stirring constantly as it burns easily. Cool
2. Add nuts, brown sugar and crushed rice Krispies. Mix together.
3. Press 2/3 of crumb mixture into a buttered 9x9 inch pan.
4. Soften ice cream and spread over crumb mixture then top remaining crumbs.
5. Freeze well. Cut in squares and top with cherry pie mix.
6. Can be served with any other toppings. Serves 6-8.

Rowena A. Wipf
Northern Electric

Please send your favorite recipes to your local electric cooperative (address found on Page 3). Each recipe printed will be entered into a drawing for a prize in December 2025. All entries must include your name, mailing address, phone number and cooperative name.



We are celebrating 80 years of service!

District 4 Director: Dean Sternhagen

I have proudly served on the board for the past eight years. One of the accomplishments I'm most proud of during that time was helping navigate the cooperative through the challenges of the pandemic, being able to maintain stable electric rates with only one increase despite rising expenses.

A highlight of my board service has been traveling to Washington, DC, where I experienced the legislative process firsthand and met with our representatives at the Capitol. It was also a memorable opportunity to explore the city's many memorials, museums, and historic landmarks.

I currently serve as Board President, a role that means a great deal to me. Being elected by my fellow directors is an honor and a sign of their trust and support.



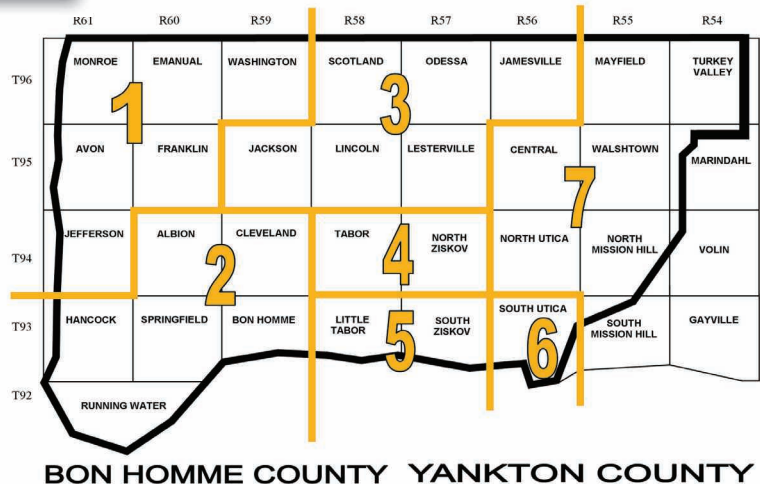
Outside of the boardroom, I'm a real estate agent with Vision Real Estate. My wife Teresa and I have three children: our son Zac and his wife Shelby, who have two sons, Palmer and Miles, and our daughters Carly and Katelyn. I enjoy hunting, golfing, and traveling, and our family enjoys spending time at our cabin in the Black Hills. I also coordinate the Rich Schild Memorial Fireworks and serve as a member of the Tabor Fire Department.



All active members in district 4 were put in a drawing in August for a chance to win an \$80 bill credit. We will apply the \$80 credit to the next months bill.

- Schedule for bill credit drawing:
- June - District 1 (John W Sedlacek)
 - July - District 2 (William P Minow)
 - August - District 3 (John Haase)
 - September - District 4 (Kenneth Decker)
 - October - District 5
 - November - District 6
 - December - District 7

District 2 \$80 Bill Credit Drawing Winner:



Employee Spotlight: Kevin Meyer



How long have you been at Bon Homme Yankton Electric?

I have been with B-Y Electric for 26 years.

What does your job entail?

My job entails visiting with consumers about electrical repairs and needs, doing farm and residential wiring, assisting the line crews with outages, service and storm work. Changing, and installing meters, installing and servicing water heater and irrigation load controllers. I also do some equipment maintenance and repairs around the shop.

What do you love most about B-Y Electric?

I have always liked the variety of work over the years and that you are not doing the exact same thing day after day.

What is your favorite memory since starting work at B-Y Electric?

I don't have any one specific favorite memory. But, I have lot of good memories with past and present coworkers and with many of the members we serve or have served in the past.

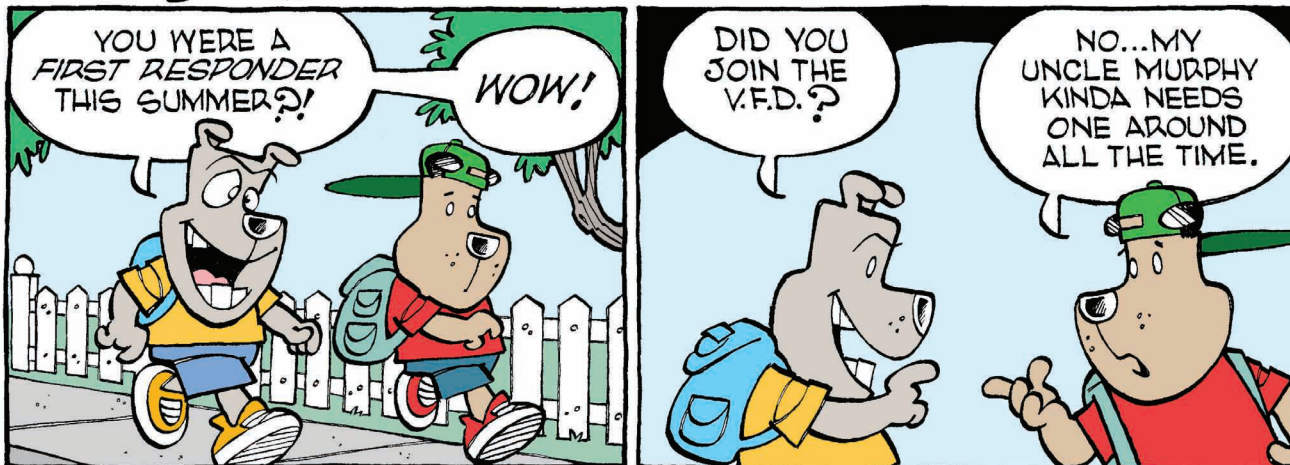
How would you describe B-Y Electric in three words?

Cooperative, Community, Friendship

A little about you outside of work.

My wife and I are a blended family and have been married for eight years we have two daughters a daughter in law and three sons. I enjoy spending time with my family and going on different adventures in life with them. My wife and I have a little hobby farm that keeps us and the kids busy with gardening, canning, and taking care of the animals. I have been a farm boy all my life so I like tinkering with my antique tractors and equipment and playing in the dirt whenever I get the chance.

Murphy





Kelly O'Bryan of Winner shows off his impressive collection of deer and elk sheds alongside his shed-hunting Labrador, Skye. Photos submitted by Kelly O'Bryan

SHED

HUNTING

Prairie Miles and Antler Piles

Frank Turner

frank.turner@sdrea.coop

Rosebud Electric member Kelly O'Bryan of Winner regularly hikes mile after mile of open prairie in search of the perfect shed. But he isn't looking for a place to store his garden tools or lawnmower – instead, he's after antlers. Each spring, deer and elk naturally shed their antlers, leaving behind prized treasures for shed hunters like O'Bryan to find.

O'Bryan jumped into the shed hunting hobby in 2020, during the social distancing months of the pandemic, after a friend invited him on a shed hunt in Montana. When O'Bryan found his first deer shed, he uncovered more than just a pair of antlers – he discovered a new passion.

"It was during the time when you couldn't go out and do anything, so you just had to make your own fun and find stuff to do," he laughed. "I just fell in love with covering as many miles as I possibly could each season, trying to pinpoint sheds. It's just like an Easter egg hunt."



O'Bryan lifts an elk shed found in Montana. Submitted Photo

Shortly after, O'Bryan fully committed to the hobby and added the ultimate scavenger to his team: a white lab named Skye. According to O'Bryan, it didn't take long for the dog to become an invaluable shed-hunting partner.

"I got Skye as a puppy, and I knew as soon as I got her, I

would train her to be a shed dog,” he said. “I taught her to sit and stay while I hid sheds all around the house. When she found one, I would give her lots of positive reinforcement. She figured it out just like that.”

Since then, O’Bryan and Skye have become seasoned shed hunters. In 2024 alone, the pair found 152 whitetail sheds, 25 mule deer sheds, nine elk sheds and 16 complete skulls – called “dead heads” – which resemble an English-style mount. Many of their best finds come from long days spent in remote country, often covering 10 to 15 miles in a single outing.

O’Bryan’s collection of sheds has grown into an impressive heap of bone and tines that continues to grow each season. Like many in the shed hunting community, he has found creative ways to showcase his finds with his most festive being an antler-adorned Christmas tree.

Others in the shed hunting community use their collection for art projects, crafting everything from knife handles to chandeliers. Some even trade or sell antlers to crafters, collectors, or pet product makers, giving shed hunting both recreational and economic appeal. Although O’Bryan does not sell his finds, he does cut up broken and damaged antlers for dog chews, gifting them to friends, family and his own favorite shed-hunting friend.

O’Bryan also has a few tips for beginners, drawn from miles of experience.

He says spring is the best time to search – antlers are freshly shed, and the grass is still short enough to give hunters a clear view. A good pair of binoculars is another must-have, helping spot antlers from a distance when the terrain allows for a higher vantage point.

And once you’ve found one shed, don’t assume the hunt is over. Whitetail deer are often in groups and antlers are often dropped in pairs so it’s worth taking the time to thoroughly scan the surroundings.

“You aren’t going to be finding many sheds unless you are willing to put on the miles,” he said. “The more you hike, the more you are likely to find sheds.”

More photos of O’Bryan’s collection and other hunting trophies can be found on his Instagram page: [@db_huntin](#).



(Above) O’Bryan praises Skye for a lifetime of discovering antlers. (Below) O’Bryan and Skye show their white tail antler finds from a winter shed hunt. *Submitted Photo*

Policy Matters Preparing for the Growing Threat of Wildfire

National Rural Electric Cooperative Association

Across the U.S., the threat of wildfire has increased significantly in recent years. For electric utilities, the danger is all too real, as dry vegetation can easily ignite from power line contact – especially during periods of high winds, which can accelerate the spread of wildfire.

In some cases, electric utilities may be liable for financial responsibilities in the aftermath of a fire linked to utility equipment. Utilities even may be held responsible for the fire, its suppression costs and any natural resource damages when they are not at fault under strict federal liability statutes, even when wildfires result from events beyond their control – such as wind-driven debris igniting fires.

Advocating for Better Processes

Utilities, including electric cooperatives, are advocating for reforms to reduce regulatory barriers that hinder wildfire prevention efforts. One of the biggest challenges is the complex and slow federal permitting process for grid-hardening projects and vegetation management. In some instances, it can take years to gain approval to remove a single hazardous tree, to replace a wooden pole with a metal pole or to underground a line. Even when approved, regulations may require utilities to leave cut trees on the ground, increasing fuel for future fires.

The Fix Our Forests Act, a bipartisan bill currently moving through Congress, aims to streamline these processes. It would expand vegetation clearance zones from 10 feet to 150 feet around power lines and shield utilities from unnecessary lawsuits. Utilities are also establishing forest operating agreements with the U.S. Forest Service to reduce strict liability.

Planning and Mitigation Strategies

As wildfire threats increase, many electric co-ops are creating detailed mitigation plans, which include strategic vegetation management, infrastructure and equipment upgrades and sometimes public safety power shutoffs.

Co-ops are also utilizing new and developing

technologies to safeguard their local grid. Some technologies help reduce the risk of fire and minimize structural damage, such as fire-resistant utility pole covers and non-expulsion fuses, which eliminate the expulsion of gases and molten metal when tripped. Additionally, co-ops are utilizing tools that aid in detecting wildfires or weather conditions that could lead to them. Technologies such as satellite and drone imaging, advanced power line sensors and strategically placed pole cameras are just a few examples of how utilities can keep a closer eye on the local grid and spot potential risks.

In addition to advocacy efforts and technologies to better protect against wildfires, co-ops understand that community collaboration is key. By working with government agencies, local businesses and community groups, co-ops will be better prepared for wildfire prevention and response.



Youth Excursion 2025

What does it take to keep the lights on? Sixteen students representing 10 electric cooperatives from across South Dakota embarked on a three-day trip to Bismarck, N.D., in July to go behind the scenes and learn about electricity generation. Sponsored by their local electric cooperatives, students toured the energy infrastructure that generates and transmits electricity into residential homes and commercial buildings, learning firsthand from industry experts.

The group kicked off the tour by visiting the Coteau Properties Co. Freedom Mine, where they watched large equipment in action and coal being mined in real time. The group followed the coal to Antelope Valley Station, a coal-fired power plant, where the coal is burned to create energy. In addition to generation, the group learned about coal byproducts, touring the one-of-a-kind Great Plains Synfuels Plant where natural gas, liquid carbon dioxide, fertilizers and fuels are produced from coal. Lastly, the group concluded their tour at Basin Electric Headquarters where most of the energy generation is facilitated and managed.

Owen Sperry, who lives within Northern Electric's service territory, said the trip provided a new perspective on how power is generated. Sperry, a sophomore at Groton Area High School, expressed interest in becoming a lineman someday.

"My uncle used to be a lineman, so I've always had a passion for it," Sperry said. "And getting to go through the shop of the Freedom Coal Mine was my favorite part of the trip. The scale of everything was just incredible."

The trip is organized by the statewide South Dakota Rural Electric Association in Pierre, S.D., and paid for by the students' electric cooperatives as part of the industry's ongoing support of the fifth cooperative principle: education, training, and information.

As cooperatives, we value our communities and our youth. If you are interested in learning more about youth activities and opportunities, reach out to your local cooperative to learn more.





HARNESSING AI

Electric Cooperatives Explore What's Next for AI

Frank Turner

frank.turner@sdea.coop

Artificial intelligence (AI) is becoming an increasingly popular tool for many industries and even in our daily lives. It has the potential to bring many opportunities, and a few challenges, to electric cooperatives. But machine learning takes time, and cooperatives are still in the process of determining how AI can be effectively used.

Like any new technology, AI brings with it a mix of potential and uncertainty. It's a hot topic — sometimes exciting, sometimes a little intimidating. But for electric cooperatives, the focus isn't on the buzz. It's on the basics: What problems can it solve? What efficiencies can it create? And how do cooperatives make sure they are using it safely?

That measured, practical approach is what's guiding East River Electric Power

Cooperative, a wholesale power supply cooperative which serves 25-member distribution systems in eastern South Dakota and western Minnesota, as it explores how AI might support the operations of its member cooperatives now and into the future.

Right now, most electric cooperatives in South Dakota have not yet integrated artificial intelligence into their operations or systems. But that doesn't mean the technology is being ignored. Across the state, many co-ops are watching AI developments closely, asking questions, and exploring how these tools might be used in the future. The focus remains on learning first — before implementing anything that could affect system reliability or member service.

At East River Electric Power Cooperative, that learning process is already well underway. According to Jeff May, chief information officer with East River Elec-

tric, the co-op has spent the past several years researching what AI has to offer. Their approach has been to identify practical, secure applications that could help improve efficiency, support employees in their day-to-day work, and ultimately benefit members.

“With the explosion of AI applications and models for both personal and professional uses, we've been exploring ways that East River Electric and our members can harness the power of AI while making sure that our data is secure from a cybersecurity perspective,” said May.

Because AI technology has the potential to interact with both internal systems and external networks, cybersecurity is a top priority. As South Dakota rural electric cooperatives look to adopt tools powered by AI and other tech, they will ensure their systems are safe from potential cyber threats. Strong digital defenses are essential for the safe use of any new technology.

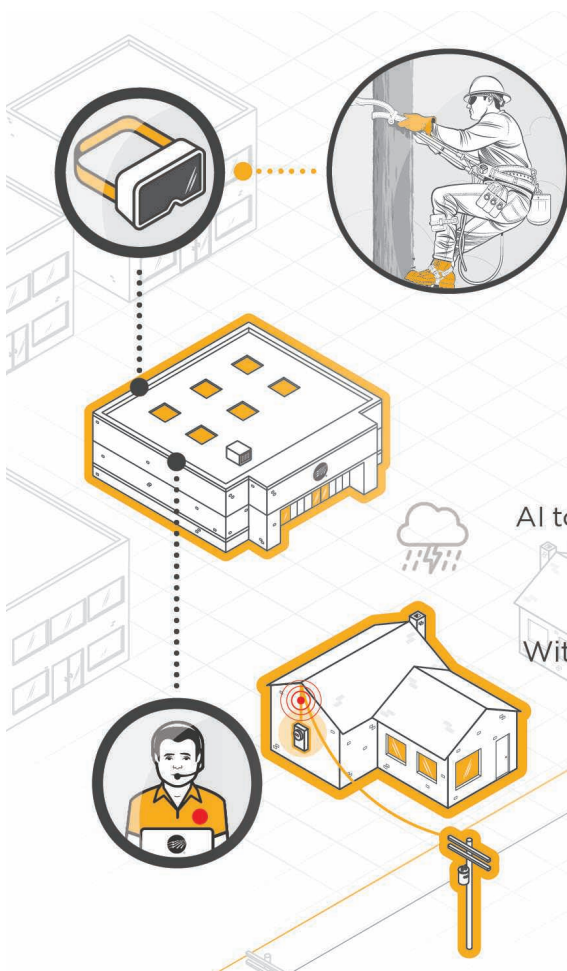
With safety in mind, May said East River Electric is actively partnering with Dakota State University graduate students to see how AI can be safely utilized by electric cooperatives. Together, East River Electric is working with the school to build an AI model that can predict electricity usage based on weather conditions and other factors to support the cooperative's load forecasting and rate forecasting capabilities. Although the technology is still in its infancy, May said he expects that someday AI will play a significant role in an electric cooperative's daily operations, including load forecasting, outage response and maintenance planning.

"It's difficult to predict how AI can be used for different types of jobs, but it will certainly become common throughout the organization as we learn all of the things AI can do," he said. "If it can be used to make our employees more productive and have a positive impact on the organization and our members, we will consider it. In some areas it could become commonplace within the next year, but throughout the cooperative it could take 3 to 5 years or more to be fully integrated in a safe and secure way."

Beyond grid operations, East River Electric is also trying out Microsoft CoPilot, an AI-powered assistant built into programs like Word, Excel, Outlook and Teams. A few employees are currently testing it to see how it might improve productivity and workflow, especially in communications and marketing departments.

Ultimately, if AI can streamline a process, predict an issue or improve service for electric cooperative members, May said it's worth considering. AI can be another tool in the cooperative tool belt that can make energy more reliable, services faster and operations more efficient.

"Over the next 5 to 10 years, AI's role in electric cooperatives is poised to grow significantly, driven by the need for efficiency, grid reliability and sustainability amid rising energy demands and technological advancements," said May. "Just the advancements that have been made in the last three years have been astounding to watch, and as more and more data centers and large language models are built in the coming years, it will become something that cooperatives likely use on a daily basis."



AI PUT INTO ACTION

Electric cooperatives are already using artificial intelligence (AI) and augmented reality (AR) for key tasks and activities. Looking ahead, co-ops see great potential for AI and AR as helpful tools for improving grid reliability and the services they provide to consumer-members.

SERVICES FOR MEMBERS

AI tools like chatbots can enhance member interactions and provide a tailored experience based on energy use data.

WEATHER FORECASTING

With the help of AI, weather forecasts will become more accurate, pinpointing areas to station utility crews.

EDUCATIONAL OPPORTUNITIES

Through augmented reality, or AR, lineworkers can experience interactive, lifelike trainings, rather than watching a video or webinar.

B-Y ELECTRIC OPERATION ROUND-UP®



Bon Homme Yankton Electric General Manager Stephanie Horst and Operation Round-Up® Committee Member Casey Kruse presented funds from Operation Round-Up® to Lesterville Community Center President Cheryl Bauder for the community center project.

Applications can be found on our website at byelectric.coop/operationround-up, in our office, or by emailing ebiz@byelectric.com. Operation Round-Up® funds may be used for community service projects, economic development, education and youth programs, environmental projects, emergency energy assistance, and disaster relief.

Applications are judged based upon 1) potential benefit to the residents and community, 2) level of community support for the project or organization, 3) capability of the applicant to deliver a quality service or program, 4) final results that can be envisioned and evaluated.

The current deadline for applications is Friday, November 14, 2025.

2025 HOT DOG NIGHT

Bon Homme Yankton Electric is always excited for the Hot Dog Night festivities, which was held on Wednesday, July 9th.

Hot Dog Night is an annual customer appreciation night where local businesses serve up free hot dogs.

This year B-Y Electric linemen Alex Caba, Travis Gause and electrician Anthony Walloch presented two hotline trailer demonstrations. Demonstrating safety precautions around power lines and how fast things can happen.

Be sure to mark your calendars for next years Hot Dog Night, held the second Wednesday of July.



Representing Bon Homme Yankton Electric Cooperative: Brian Brandt, Bob Ruppelt and Deb Ruppelt.



Taxes To Schools	
Avon 4-1	\$14,544.65
Bon Homme 4-2	\$69,666.68
Scotland 4-3	\$28,712.02
Menno 33-2	\$10,607.06
Tripp-Delmont 33-4	\$2,959.75
Viborg 60-5	\$958.46
Irene 63-2	\$16,051.77
Yankton 63-3	\$160,958.73
Total	\$304,469.12

Taxes From Providers	
Bon Homme Yankton Electric	\$154,840.54
East River Electric Co-op	\$80,915.08
Basin Electric Power Co-op	\$68,713.50
Total	\$304,469.12

Supporting Our Local Schools



Electric cooperatives in South Dakota do not pay property tax on their electric utility systems such as poles, wires, and transformers. Instead, electric cooperatives pay a kilowatt hour tax. This tax is based on the kilowatt hours that are sold to their members during the previous year.

School districts in our service area have received \$304,469.12 in gross kWh tax as a result of electric sales to members of Bon Homme Yankton Electric in 2024.

The table breaks down the gross kWh taxes paid by Bon Homme Yankton Electric, East River Electric on our purchases of electricity and Basin Electric’s tax based on kWh sales to East River on behalf of our members.



Stay back at least 10 feet and watch for kids crossing unexpectedly.

As school buses hit the road, remember: the most dangerous time for kids is when they’re getting on or off the bus.

- Stop for red lights.
- Watch for kids.
- Stay 10 feet back.

Let’s work together to keep every child safe this school year. #BackToSchool #DriveSmart

Market at the Meridian - Yankton SD



Every Saturday from May to October Yankton South Dakota’s Downtown Farmers Market is the place to be.

Bon Homme Yankton Electric was invited Saturday, July 19th as the local non-profit. We had fun entertaining youth in the area on electrical safety with interactive games and questionnaires for a prize.

Market at the Meridian is known for small scale agriculture and specialty handcrafted items.

There is still time to catch this fun event. Saturday’s May - October from 9 am to noon, 2nd and Douglas, Yankton, SD.

REGISTER TO WIN!

Bring this coupon and mailing label to the Touchstone Energy® Cooperatives booth at Dakotafest or the South Dakota State Fair to win a prize!

Your Phone Number: _____

Your E-mail Address: _____

BLACK HILLS AT PALMER GULCH

KOA RESORT

MT. RUSHMORE RESORT & LODGE
at Palmer Gulch

\$5 ENTRY

POLKA PALOOZA

SEPTEMBER 12-13, 2025
FRI 6 - 10PM • SAT 5 - 9PM

- GERMAN FOOD
- BEVERAGES
- DANCING

To have your event listed on this page, send complete information, including date, event, place and contact to your local electric cooperative. Include your name, address and daytime telephone number. Information must be submitted at least eight weeks prior to your event. Please call ahead to confirm date, time and location of event.

UNTIL OCT. 31

Wallace Dow, Prairie Architect Traveling Exhibit
Lake County Museum
Madison, SD
605-256-5308

SEPT. 2, OCT. 4

Davis Indoor/Outdoor Flea Market & Vendor Fair

9 a.m.-3 p.m.
Davis American Legion
Davis, SD
605-351-3074

SEPT. 5-7

James Valley Threshing Show & Tractor Club

Threshermen's Park
Andover, SD
www.jamesvalleythreshers.com

SEPT. 7

Farmer Tractor Parade
1 p.m.
Tractors, Cars & Food
Farmer, SD

SEPT. 7

Homesteader Day Celebration
Pioneer Demonstrations
1-4 p.m.
Beaver Creek Nature Area
Valley Springs, SD

SEPT. 13-14

Harvest & Kuchen Festival
Delmont, SD
www.twinriversoldiron.org

SEPT. 13-14

SD Senior Softball Tournament
Huron, SD
605-295-2039

SEPT. 14

Pleasant Valley Lutheran Church 150th Anniversary
Vermillion, SD
605-670-2772

SEPT. 19

Veterans Stand Down
SD Military Alliance
8:30-11:30 a.m.
1600 W. Russell St.
Sioux Falls, SD

SEPT. 19-20

Holiday Arts Fall Craft Show
Davison Cty Fairgrounds
Mitchell, SD
605-770-8136

SEPT. 19-20

SiouxperCon Annual Convention
Benefits Make-A-Wish, REACH Literacy, JY6 Foundation
Sioux Falls Convention Center
Sioux Falls, SD

SEPT. 26-28

Coal Springs Threshing Bee
Featuring Horse-Drawn Equipment
Meadow, SD
605-788-2229

SEPT. 27

Your Race, Your Pace
9:30 a.m.
Wylie Park
Aberdeen, SD

SEPT. 27

Wheelin' To Wall Cycling Event

Wall, SD
www.wheelintowall.com

OCT. 3

DSU Architecture Walking Tour
3-4 p.m.
Lake County Museum
Madison, SD

OCT. 4

Pumpkin Train, Vendor Showcase
Prairie Village
Madison, SD

OCT. 10-11

Holman Acres Pumpkin Fest & Vendor Show
Sat. 12-6 p.m., Sun. 10 a.m.-6 p.m.
Philip, SD
605-441-1060

Note: We publish contact information as provided. If no phone number is given, none will be listed. Please call ahead to verify the event is still being held.